



## **PAGplay – EPDM Safety Flooring**

**Total Thickness in combination with PAGplay SBR elastic layer: 30-140mm**



### **2-Layer Elastic Seamless Playground Flooring of 20-140mm total thickness**

PAGplay – EPDM is a water-permeable system of SBR and EPDM bound with MDI-based Polyurethane Binder. It is ideal for Playgrounds and Multi-Game-Areas and fulfils the requirements of EN1177 and EN71.3

#### **1.0 Build-Up**

**Subbase** of fully cured (at least 28 days) asphalt or concrete free of any dirt or spillage, that might prevent bonding of the rubber to the asphalt.

Alternatively, unbound surfaces such as compacted roadbase can be used, but it is necessary to have a rigid border to limit possible horizontal movement that might lead to detachment from the concrete borders of the rubberized area. A layer of geotextile fabric has to be spread to separate the SBR layer from the unbound surface.

**PU Primer** applied by roller on top of the subbase.

**SBR layer** consisting of **SBR** (recommended granule size 2-4mm) mixed with PU Binder **PB3300** installed at 20-125mm thickness.

Alternatively, PAG mSBR – Medical Recycling SBR or PAG rSBR – Recycling SBR can be used. For more information check the Technical Data sheet PAG mSBR



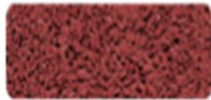
**PU Primer** to be applied by roller on top of elastic SBR layer.

**EPDM layer** consisting of **EPDM250** (granules of 1.0 – 3.5mm size) mixed with PU Binders **PB3300** or **PB3400** installed at 10-15mm thickness.

## 2.0 Colour Chart



01 - Bright Red \*  
~RAL 3017



02 - Red  
~RAL 3016



03 - Orange  
~RAL 2008



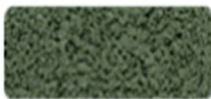
04 - Red Violet  
~RAL 4002



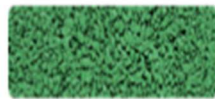
05 - Bright Yellow \*  
~RAL 1012



06 - Golden Yellow  
~RAL 1002



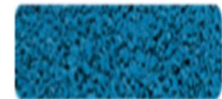
07 - Light Green  
~RAL 6011



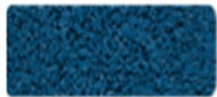
08 - Grass Green  
~RAL 6017



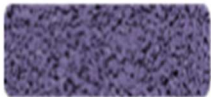
09 - Dark Green  
~RAL 6005



10 - Sky Blue \*  
~RAL 5015



11 - Dark Blue \*  
~RAL 6011



12 - Purple \*  
~RAL 4005



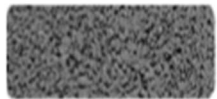
13 - Light Ivory \*  
~RAL 1015



14 - Beige  
~RAL 1013



15 - Brown  
~RAL 8024



16 - Light Grey \*  
~RAL 7037



17 - Dark Grey  
~RAL 7011



18 - Black  
~RAL 9004



19 - White \*  
~RAL 9010

**Note: Colours marked with an \* are recommended to be applied with Aliphatic Binder PB3400**

Aromatic Polyurethane Binder will yellow under influence of UV (sunlight). This yellowing is normal and does not influence the quality of the materials, but will change the look of the colours. This effect will wear off after 3-5 months, as the surface binder will be weathered off.



### 3.0 Recommended Thickness

**Note:** The below values are average values derived from many tests on sites and in the laboratory. Based on EN1177, the final Free Fall Height Values (HIC1000) depend on many conditions like temperature, humidity, troweling strength and others. For certification, inspection needs to be raised at site.

#### Thickness

<b>SBR and Recycling SBR</b>	<b>Medical Recycling SBR</b>	<b>Critical Fallheight after EN1177</b>
30mm		1000mm
	35mm	1200mm
40mm		1400mm
50mm		1600mm
	45mm	1700mm
60mm		1800mm
	60mm	1900mm
70mm		2000mm
	75mm	2200mm
80mm		2250mm
	85mm	2400mm
105mm		2700mm
120mm		2850mm
	95mm	2900mm
140mm		3000mm
	100mm	3000mm



## 4.0 Other Technical Characteristics

Sliding Behaviour as per **DIN 18035 – Part 6**

Sliding Coefficient  $\mu$  - dry surface (req:  $\leq 0.8$ ) 0.66

Sliding Coefficient  $\mu$  - wet surface (req:  $\geq 0.5$ ) 0.52

Sliding Behaviour as per **DIN 51130:2010 – Part 10** for dry surfaces

Middle Slope of 6 tests 16% (Class R10)

Sliding Behaviour as per **DIN 51097:1992 – Part 11** for wet surfaces barefoot

Middle Slope of 8 tests 21% (Class B)

Flammability as per **DIN 4102**

**Class B2** (normal flammability)

Abrasion Behaviour as per **DIN 18035 – Part 6**

Relative Abrasion Resistance  $rV = 18$  ( $\geq 1$  for textured surfaces)

After 5 cycles, the amount of abraded material was ~29% of the amount after 20 cycles.