



PAG EPDM1035 – fresh, coloured through EPDM rubber granules

Technical Data Sheet

Introduction

PAG EPDM1035 is a fresh, coloured through EPDM granule available in 25 different colours with a polymer content of at least 25% and a crumb size between 1.0 und 3.5 Millimetern. Combined with aromatic (PB3300) und aliphatic (PB3400) Polyurethan binder PAG EPDM1035 is used to built EPDM wear layers for playgroud and sport surfaces. In combination with our SBR,mSBR und rSBR elastic layers critical fall heights of up to 3000mm after DIN EN 1177 can be achieved.

1.0 Technical Information

Size	1.0mm – 3.5mm
Material	fresh, colured trough EPDM rubber granules
Colour	according to the respective RAL
Denstiy	1,6g/cm ³ (+/-0,3)
Soleubility in water	not soluble
Packaging	25 kg bags

For additional technical details check the material safety data sheet.

2.0 Product Safety Data

Non-toxic and harmless, but flammable material, combined with PU-binder self-extinguishing

For additional technical details check the material safety data sheet.



3.0 Colour Chart



01 - Bright Red *
~RAL 3017



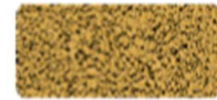
02 - Red
~RAL 3016



03 - Orange
~RAL 2008



04 - Red Violett
~RAL 4002



05 - Bright Yellow *
~RAL 1012



06 - Golden Yellow
~RAL 1002



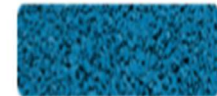
07 - Light Green
~RAL 6011



08 - Grass Green
~RAL 6017



09 - Dark Green
~RAL 6005



10 - Sky Blue *
~RAL 5015



11 - Dark Blue *
~RAL 6011



12 - Purple *
~RAL 4005



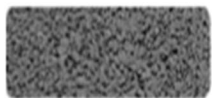
13 - Light Ivory *
~RAL 1015



14 - Beige
~RAL 1013



15 - Brown
~RAL 8024



16 - Light Grey *
~RAL 7037



17 - Dark Grey
~RAL 7011



18 - Black
~RAL 9004



19 - White *
~RAL 9010

Note: Colours marked with an * are recommended to be applied with Aliphatic Binder PB3400

Aromatic Polyurethane Binder will yellow under influence of UV (sunlight). This yellowing is normal and does not influence the quality of the materials but will change the look of the colours. This effect will wear off after 3-5 months, as the surface binder will be weathered off.

4.0 Disclaimer

Our products show the above mentioned attributes, when applied and tested according to DIN / EN norms. Product description and application recommendations are given in believe to their correctness, but they are relying on experience and are not guarantees. They do not release the user from a functional testing in current climate and situation. No guarantee will be given for the products on any special application.